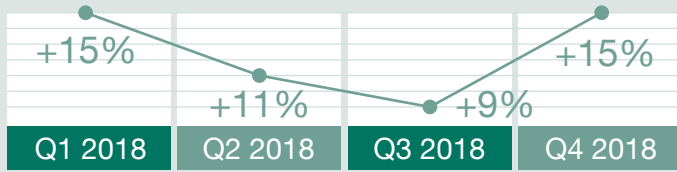


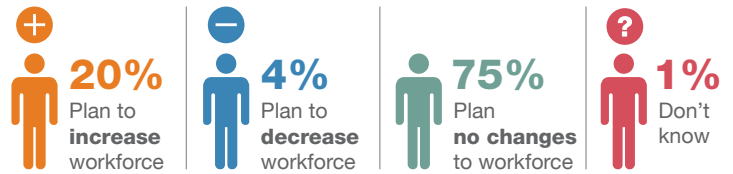
NEW ZEALAND Q4 2018

+15% New Zealand's Q4 2018 Net Employment Outlook

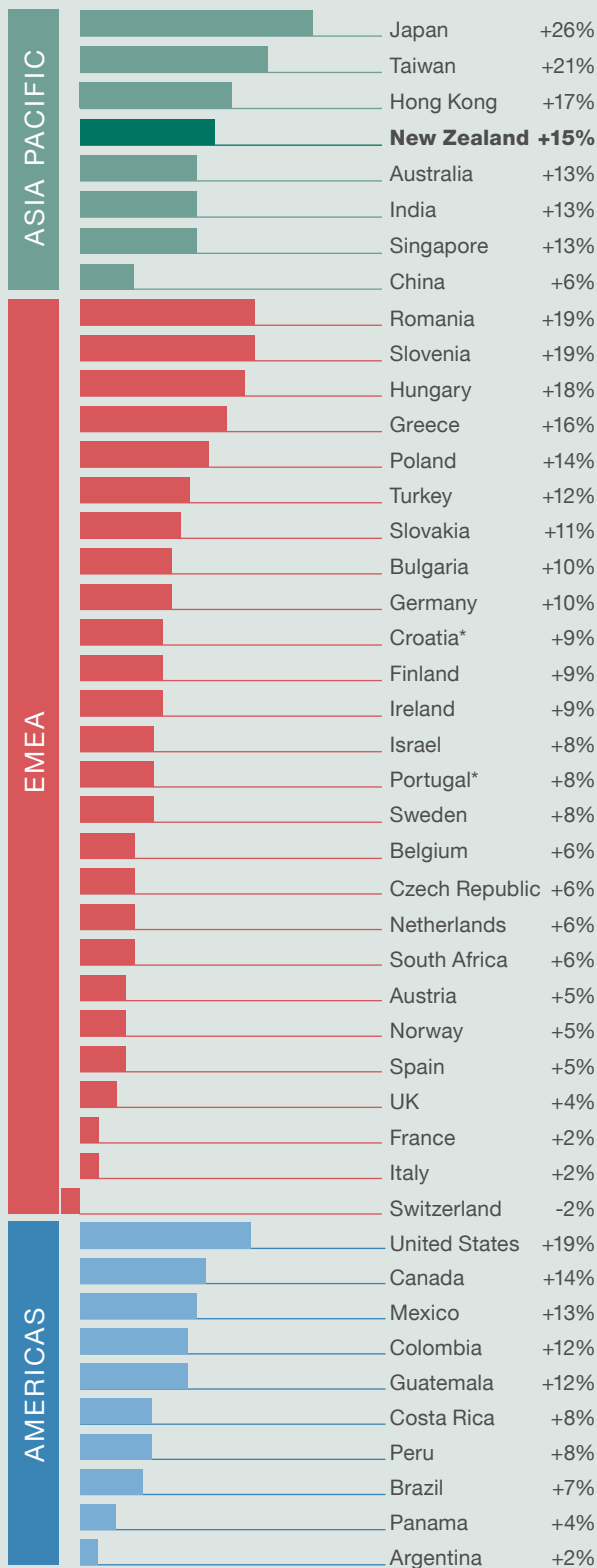


Over **650** New Zealand employers were asked:

How do you anticipate total employment at your location to change in the next three months compared to the current quarter?

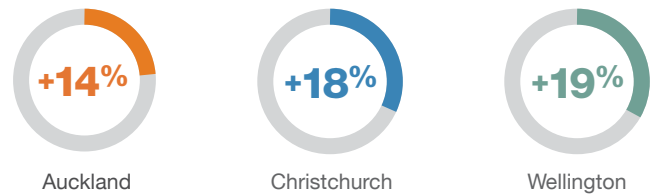


Global Net Employment Outlooks



*Survey results for both Croatia and Portugal are not seasonally adjusted.

Q4 2018 Hiring intentions



Hiring intentions via organisation size:



Hiring intentions via sector:

