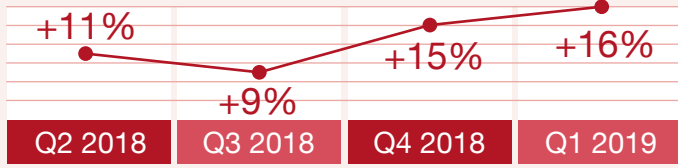
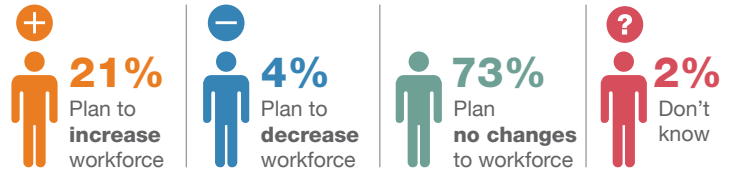


NEW ZEALAND Q1 2019

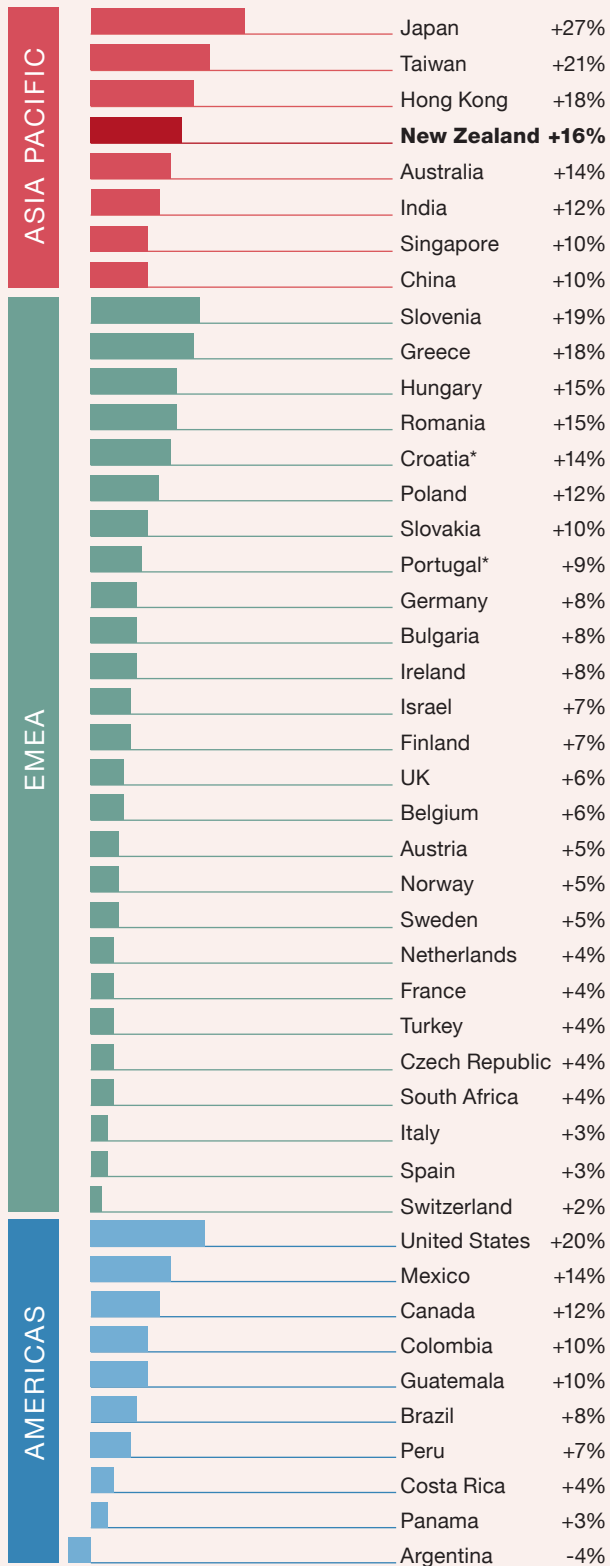
+16% New Zealand's Q1 2019 Net Employment Outlook



Over **650** New Zealand employers were asked:
How do you anticipate total employment at your location to change in the next three months compared to the current quarter?

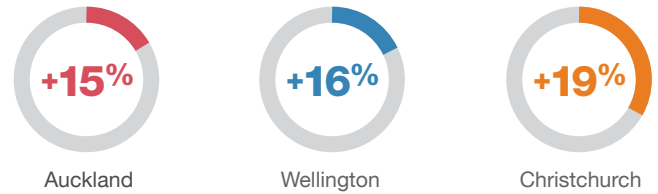


Global Net Employment Outlooks

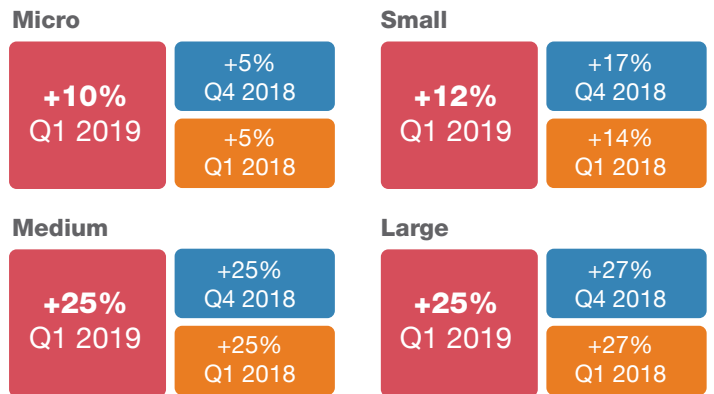


*Survey results for both Croatia and Portugal are not seasonally adjusted.

Q1 2019 Hiring intentions



Hiring intentions via organisation size:



Hiring intentions via sector:

